

# CONTI+ Range

Showers & Washroom Solutions





# CONTI+ showers



## Shower series CONPRIMUS

- Hi-tech shower panel with only 4 cm panel depth
- With anti-scalding protection
- E-Control: electronic control unit
- Thermostat-E: fully electronic mixer
- Minimal water column (patented)
- Hygienic flush with selectable target temperature
- With integrated temperature sensor
- Stainless steel



## Shower series CONGENIAL

- Shower panels & concealed showers
- Electronic or mechanical activation
- Piezo push button / oil hydraulics / water hydraulics / on-off handle
- CONGENIAL hydraulic unit
- Solid copper pipework to shower outlet
- Stainless steel / acrylic composite / chrome plated stainless steel



## Shower series CONFRESH

- Shower panels with integrated fresh water module
- Electronic activation
- Piezo push button
- Plate heat exchanger
- CONGENIAL hydraulic unit
- Stainless steel



## Shower series CONSMART

- Shower panels
- Electronic activation
- Piezo push button
- CONSMART hydraulic unit
- Flexible hoses
- Stainless steel / acrylic composite
- APP upgrade possible



## Shower series CONBASE (SLIM)

- Shower panels & showers, exposed
- Electronic
- Piezo pushbutton
- CONBASE water inlet
- 6 V/DC ROBUST solenoid valve
- Brushed stainless steel



## Shower series CONFREE

- Freestanding showers
- Electronic activation
- Piezo push button
- CONFREE hydraulic unit
- Outdoor used
- Stainless steel



## Shower system CONBASE (SLIM)

- Concealed showers
- Electronic activation
- Piezo push button
- CONBASE hydraulic unit
- Without thermostat
- Fully fitted kit
- Chrome-plated brass, DN15 or DN20



## Shower series CONFLOW (DN20)

- Concealed showers
- Electronic activation
- Piezo push button
- CONFLOW hydraulic unit
- With/without thermostat
- Fully fitted kit
- Stainless Steel, DN20



## Shower series CONBASE

- Concealed showers
- Electronic activation
- Piezo push button
- CONBASE hydraulic unit
- Without thermostat
- Fully fitted kit
- Stainless steel



## Shower series CONBASE

- Concealed showers
- Mechanical activation
- Oil hydraulics
- CONBASE hydraulic unit
- Without thermostat
- Fully fitted kit
- Stainless steel



## Shower series tipolino

- Exposed showers
- Electronic activation
- Start/stop function
- With thermostat
- Outlet at the top or bottom
- Chrome plated



# CONTI+ faucets



## ultra washbasin faucets

- Touch-free, IR electronically controlled
- One key maintenance
- Integrated shut-off valve (TwistStop)
- Battery, transformer or VARIOconnect
- Integrated photo-voltaic panel or turbine module
- Available in 3 heights and different finishes



## lino/tipolino washbasin faucets

- Touch-free, IR electronically controlled or with electronic start/stop button
- With/without temperature control, non-pressurised
- Version with integrated photo-voltaic panel
- Battery, transformer or VARIOconnect
- Chrome plated



## lino AS washbasin faucet

- Touch-free, IR electronically controlled
- With thermostatic temperature control
- Anti-scalding protection based on DIN EN 1111
- Fully automatic self-calibration
- Chrome plated



## lino PRIMUS washbasin faucet L40

- Touch-free, IR electronically controlled
- Electronic anti-scalding protection (DIN EN 1111)
- Thermostat-E: fully electronic mixer
- Hygienic flush with selectable target temperature
- Chrome plated



## iQ washbasin faucets

- Touch-free, IR electronically controlled
- With/without temperature control, non-pressurised
- Dual infrared sensors
- Battery, transformer or VARIOconnect
- Chrome plated



## maxx washbasin faucets

- Touch-free, IR electronically controlled
- With/without temperature control
- IR sensor with TOUCH function
- Hot water adjustable flow limiter
- Battery, transformer or VARIOconnect
- Chrome plated



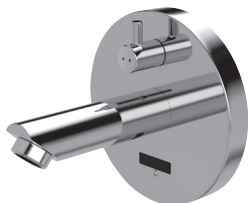
## loopino washbasin faucets

- Touch-free, IR electronically controlled
- With/without temperature control, non-pressurised
- Dual infrared sensors
- Battery, transformer or VARIOconnect
- Chrome plated



## lino SoftTouch self-closing faucets

- Mechanical
- Smooth actuation, independent of water pressure
- With/without temperature control
- CONTI+ automatic shut-off cartridge technology
- Stainless steel



## lino flush mounted wall faucet

- Touch-free, IR electronically controlled
- With/without temperature control
- "Temporary off" and "continuous on" functions
- Hot water lock
- Battery, transformer or VARIOconnect
- Spout: 120/170/220 mm
- Chrome plated



## ultra flush mounted wall faucet

- Touch-free, IR electronically controlled
- Without temperature-mixing
- Integrated shut-off valve (TwistStop)
- Battery, solar, VARIOconnect
- Energy saving function with photo-voltaic panel
- Chrome plated



## CONGENIAL FIT flush mounted wall faucet

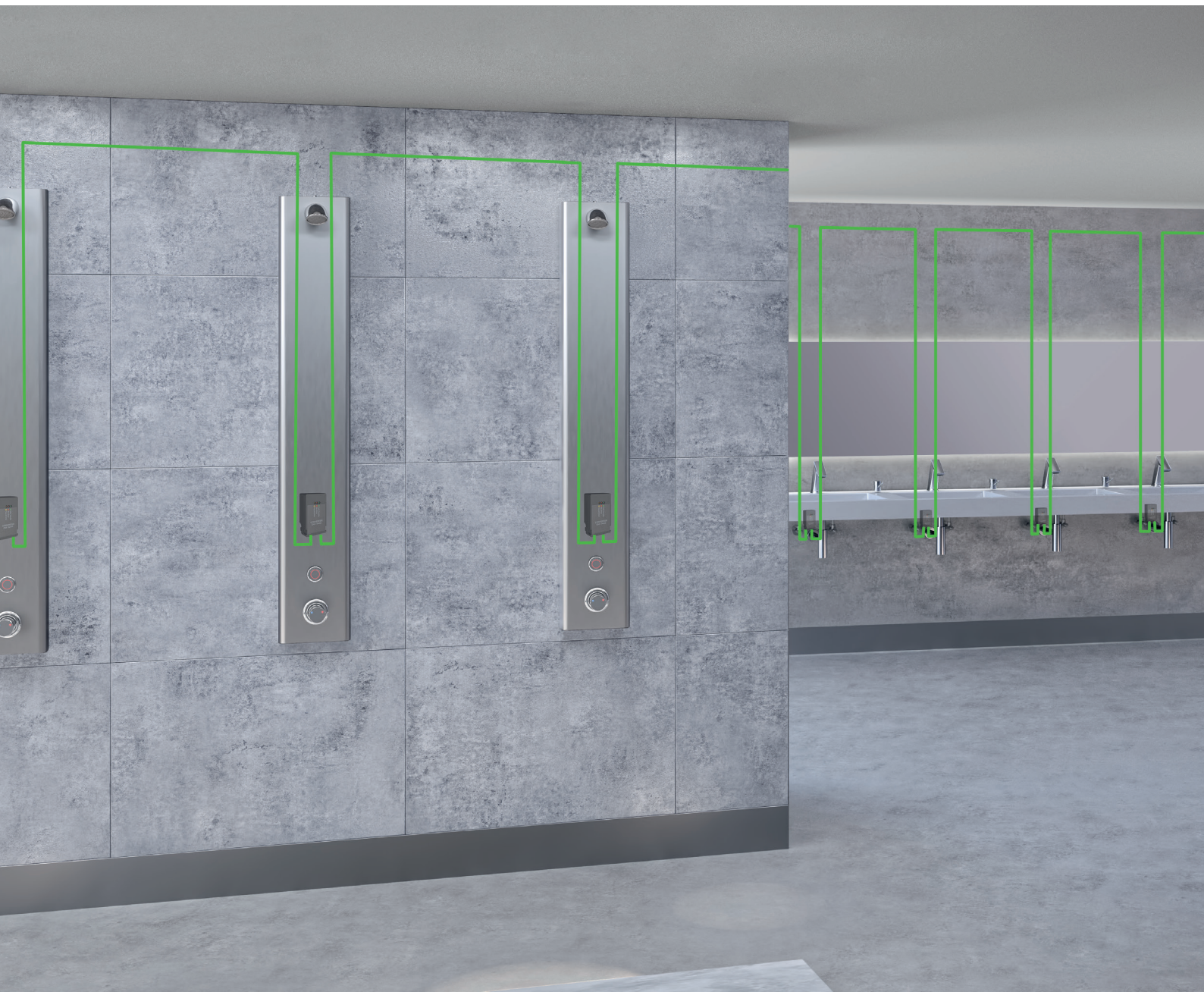
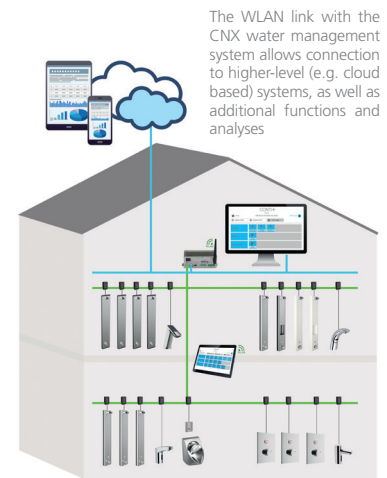
- Touch-free, electronically controlled
- Also with IR sensor
- Thermostatic temperature control
- Battery, transformer or VARIOconnect
- Rectangular
- Spout: 170/220 mm
- Stainless steel/chrome plated

## Water management system

The innovative CNX water management system meets even the most demanding hygiene requirements – for excellent drinking water hygiene and correct operation of the whole system at all times.

As well as networking the proven CONTI+ shower faucets, the system also allows integration of the full range of CONTI+ washbasin and urinal faucets. Depending on the type of CNX controller, up to 64 or 150 faucets and devices can be centrally controlled using browser-based software. The systems cover a wide area extending to 350 metres. Networking is via simple cabling, or Bluetooth if required. The CNX water management system can also be linked to higher-level building management systems as needed – for integrated facility management.

The topology of the system allows straightforward networking of the faucets in a linear, star-delta or tree layout. There is therefore no need for either terminators or special bus cables. The standard cables – routed in empty conduits or concealed – are quickly and easily connected to the waterproof single-wire terminals. Additional measures for shielding cables are not required.



## Intuitive APP based control of individual faucets

Both new and existing drinking water installations need to meet numerous hygiene requirements – in Germany, for example, the German Drinking Water Ordinance (TrinkwV) 2023. With our CONTI+ Service APP, we offer an effective means to extend the necessary programming, logging and documentation of the required hygiene measures to the control units of the individual faucets.

The Service APP allows convenient management of CONTI+ shower panels, concealed showers, washbasin and urinal faucets. Thanks to the user friendly and intuitive interface, faucets can be identified and selected for very straightforward management, programming and data readings.

The APP guides users systematically and logically through all menu items and features so that they can program sanitary rinses, check and set water running times, optimise sensor ranges, save settings and usage data, and more. Used in conjunction with the BLE Converter, secure communication is established via Bluetooth® between the faucet and the required device (e.g. smartphone or tablet). All this can be done wirelessly, easily, intelligently and securely.



### BLE Converter for Service APP

- For establishing the Bluetooth® connection between CONTI+ faucets and a mobile control unit such as a smartphone or tablet
- Smart faucet communication via the CONTI+ Service APP
- Displays & analysis for each faucet
- Fixed settings for each faucet
- Operating voltage: 6-12 V/DC



**Bluetooth®**  
Wireless communication between Service APP and faucets via the BLE Converter



**Intuitive operation**  
License management feature, software interface, analyses and graphics



**Extensive services**  
Programming, logging and maintenance



# CONTI+ urinals flush valves



- lino concealed urinal flush valves U10
- Touch-free, electronically controlled
  - Robust concealed urinal flush valve
  - IR sensor
  - Fully fitted kit
  - Battery, mains, VARIOconnect
  - White panel / white windows



- ultra concealed urinal flush valves U18
- Touch-free, IR electronically controlled
  - Dual infrared sensors
  - Fully fitted kit
  - Battery, mains, VARIOconnect
  - Front panel: toughened glass, white
  - Front panel: toughened glass, black
  - Mounting frame, chrome



- iQ concealed urinal flush valve U28
- Touch-free, IR electronically controlled
  - Flush mounted without electrical wiring
  - Dual infrared sensors
  - Fully fitted kit
  - Battery, mains, VARIOconnect
  - Stable front panel: brushed stainless steel
  - Mounting frame: chrome plated composite



- lino exposed urinal flush valve U60
- Touch-free, electronically controlled
  - Wall mounted without electrical wiring
  - Robust brass housing, polished
  - Dynamic IR sensor
  - Stop valve with dirt filter and collar
  - Chrome plated





# CONTI+ washbasins



## SteelTec (Lund)

- Round washbasin
- Drop-in washbasin, glued into place
- With overflow
- With overflow set
- Stainless steel on the inside
- High gloss polish on the outside



## SteelTec (Malmoe)

- Oval washbasin
- Wall mounted
- Without faucet hole
- With overflow
- Matt stainless steel



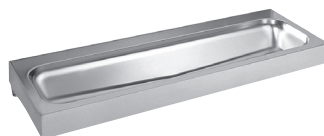
## SteelTec (Emden)

- Sculpted washbasin
- Wall mounted
- With integral soap tray
- With overflow set
- With faucet hole
- With plug and chain
- Matt stainless steel



## SteelTec (Bergen)

- Deep & hygienic washbasin
- Wall mounted
- With washboard stamping at the front
- With integral hygienic edge
- Without faucet hole
- With overflow set
- Matt stainless steel



## SteelTec (Fjord)

- Wash trough
- Wall mounted
- Seamlessly pressed
- Without overflow
- Without faucet hole
- Matt stainless steel



## SteelTec laboratory sink (Visby)

- Wall mounted
- With overflow set
- With rear panel
- With drain plug and chain
- Matt stainless steel



## Single and double washbasins

- Fixed measure
- Angular, semi-circular, round, oval basins
- Resin-bonded mineral casting/ mineral material
- White glossy / white matt



## Customized washbasins

- Customized
- Single, double and row washbasins
- Angular, semi-circular, round, oval basins
- Resin-bonded mineral casting/ mineral material
- White glossy / white matt

# CONTI+ Hygiene

For safe hand hygiene

With the comprehensive CONTI+ hygiene concept, we offer you a complete range for your building. Protect your customers, employees, colleagues and yourself. Have peace of mind knowing that you are in compliance with hygiene requirements.

CONTI+ soap and disinfectant dispensers are available in electronic (battery operated) and manual versions. They can be mounted directly on the wall or on a floor or tabletop stand (only electronic). Conveniently transportable, these dispensers are also ideal for businesses with high footfall.

Keep safe!

# CONTI+ sanitary equipment



### SteelTec DESIGN

- Soap and disinfectant dispenser
- Touch-free
- Battery operation, optional mains connection (or manual)
- Wall mounted or on a stand
- LED light to indicate operation
- Matt stainless steel and vandal-proof
- 950 ml capacity



### BJÖRK electronic

- Soap and disinfectant dispenser
- Touch-free IR sensor
- Battery operation, optional mains connection (or manual)
- Wall mounted or on a stand
- LED light to indicate operation
- Matt black stainless steel housing
- Choice of 6 cover plates
- 950 ml capacity



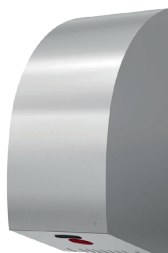
### Washbasin soap dispenser, short

- Soap dispenser for washbasin mounting
- Manual operation
- Tamper-proof dosing pump
- Liquid soap refilled from above
- Plastic refill container
- Chrome
- 500 ml capacity



### SteelTec AE DESIGN

- Hand dryer
- Touch-free IR sensor
- With induction motor
- Adjustable activation distance
- Adjustable air speed
- Wall mounted
- Stainless steel



### SteelTec TURBO DESIGN

- Hand dryer
- Touch-free IR sensor
- Powerful commutator motor
- Adjustable activation distance
- Adjustable air speed
- Wall mounted
- Matt stainless steel



### BJÖRK

- Hand dryer
- Touch-free IR sensor
- Powerful commutator motor
- LED light to indicate operation
- Adjustable activation distance
- Adjustable air speed
- Matt black stainless steel housing



### SteelTec DESIGN

- Waste and sanitary bin
- Self-closing swing lid
- Wall mounted
- Fully welded, rustproof inner bin
- Vandal-proof lock
- Matt stainless steel



### BJÖRK

- Waste bin
- Wall mounted
- Lock and universal key
- Door that opens at the side
- Capacity: 18 litres

Additional colours, designs and models available – just ask us for more information.

# CONTI+ sanitary equipment



## SteelTec DESIGN

- Paper towel dispenser
- Wall mounted
- Vandal-proof lock
- Matt stainless steel
- Capacity: 400 sheets of 2-layer Z/C fold paper towels (max. 95x250 mm)



## BJÖRK

- Paper towel dispenser for centre pull paper rolls
- One-handed operation
- Wall mounted
- Lock and universal key
- Matt black stainless steel housing
- Choice of 6 cover plates



## Paper towel dispenser, surface mounted

- For wall mounting, with 3 drilling holes
- Lockable from above
- Matt stainless steel



## SteelTec DESIGN

- Sanitary bin
- Wall mounted
- With hygienic tip-up lid
- Fully welded, rustproof inner bin
- Vandal-proof lock
- Matt stainless steel
- Capacity: 7 litres



## BJÖRK

- Sanitary bin
- Wall mounted
- With hinged lid
- Inner, spring-loaded bag holder
- Matt black stainless steel housing
- Capacity: 12 litres



## SteelTec DESIGN, 2 rolls

- Toilet paper holder
- 2 standard paper rolls
- Wall mounted
- Easy access when replacing paper rolls
- Matt stainless steel



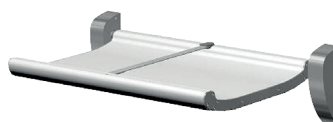
## SteelTec DESIGN

- Toilet paper holder
- Various roll configurations
- Wall mounted
- Vandal-proof lock
- Easy access when replacing paper rolls
- Matt stainless steel



## BJÖRK, 2 standard rolls

- Toilet paper holder
- 2 standard paper rolls
- Wall mounted
- Powder coated stainless steel housing, matt black



## SteelTec DESIGN Changing table

- Safety changing table with load capacity up to 400 kg
- Safety belt and rounded edges for optimum safety
- folds up to save space
- matching paper holder and paper rolls
- Wall-mountable and vandal-proof
- Aluminium profile white | RAL Classic colours available

## Dependable & innovative

Hygienic, smart shower room and washroom concepts to improve quality of life have been the hallmark of the CONTI+ brand for 50 years.

With our innovative technologies, broad product portfolio and comprehensive range of services, we offer optimum solutions to meet all our customers' needs for new build and refurbishment projects. Impressive, flexible all-round expertise.

From advanced electronic and mechanical shower systems, washbasin faucets and urinal controls through to washbasins, as well as complete wash-room equipment and water management systems, we take an integrated approach to all products and system solutions, with a strong focus on sustainability, hygiene and reliability. As a result, the CONTI+ brand is respected among design engineers and architects as a professional partner.



Certificates are product related and not valid in general

CONTI Sanitärarmaturen GmbH  
 Hauptstrasse 98  
 35435 Wettenberg | Germany  
 Phone +49 641 98221 0  
 Fax +49 641 98221 50  
 info@conti.plus  
 www.conti.plus

Member of Fortuna Group 

